

build the future

15	Geographic Presence
15	Associations and international agreements
14	Engagement
13	Environment
12	Hydraulic
11	Planning and Development
10	Infrastructures
09	Industry & Energy
08	Building
07	Economic studies and Consulting
06	Business areas
06	Organization
04	General presentation
03	President's Message

Summary



## President's Message

“**COMETE** Engineering strives to support each of its clients in the most suitable way to its expectations and needs”



For over twenty years, the COMETE group has developed a strong expertise in the fields of engineering and consultancy, both in Tunisia and abroad.

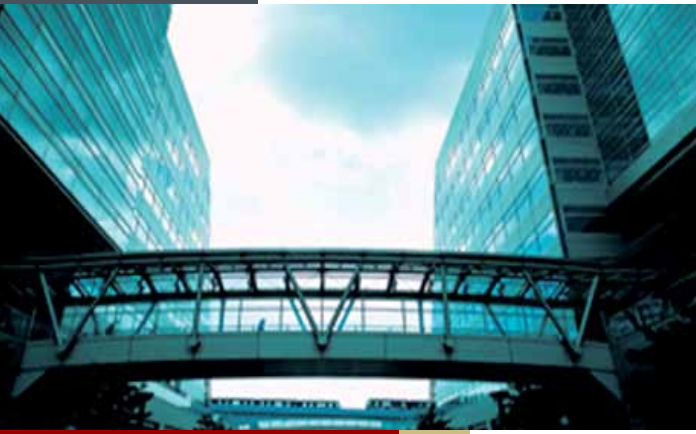
Its references in Africa and the Maghreb region reinforce its position as a major regional leader that serves development.

Its experience and high mastery of techniques and technologies enable it to concretize ideas, turning projects into achievements.

Every new project is an opportunity for COMETE group to mobilize its resources to serve its clients, within a relationship of trust and respect, and to provide sustainable solutions and quality services to grant their total satisfaction.

**Radhi MEDDEB**  
Chairman





## Key Indicators

Inception date:	1987
Locations:	Tunis, Algiers, Tripoli
Share Capital:	1 000 000 TD

## Profile

Firmly established in the engineering field, COMETE group operates mainly in the fields of building, transport infrastructures, hydraulic, energy and industry, planning and environment.

COMETE Engineering deploys also a strong expertise in the economic studies, the public development strategies and advice to private companies.

Its flexible organization, backed by a highly qualified in-house expertise, its privileged relationship with various world leaders of engineering business give to COMETE Engineering all the required abilities to meet the expectations and the highest demands of its clients and market.

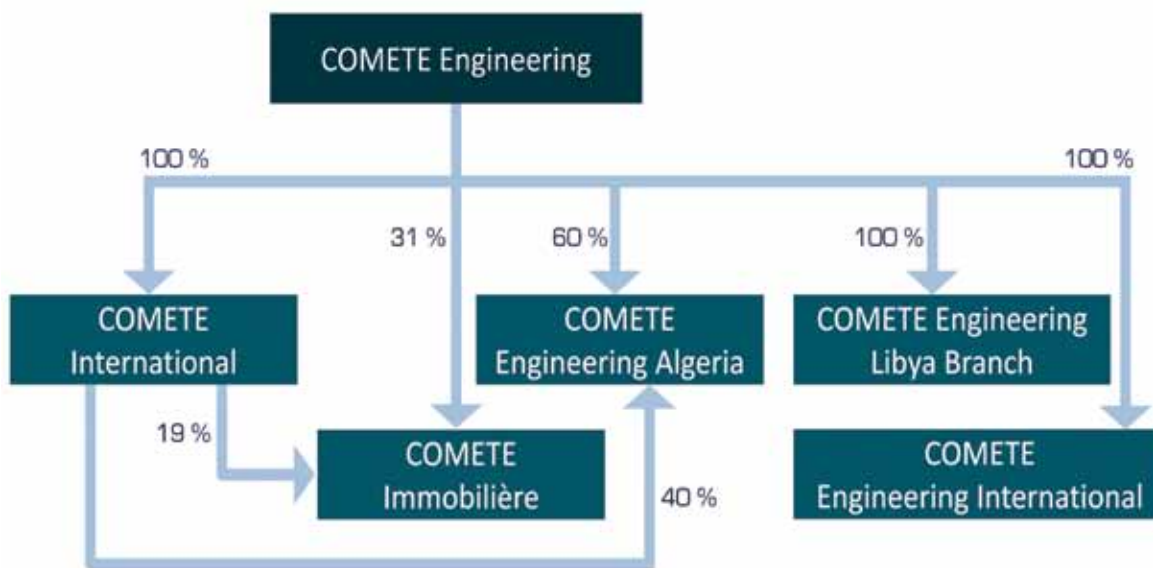
## Expertise

COMETE Engineering offers a full range of services covering all the phases of the project development.

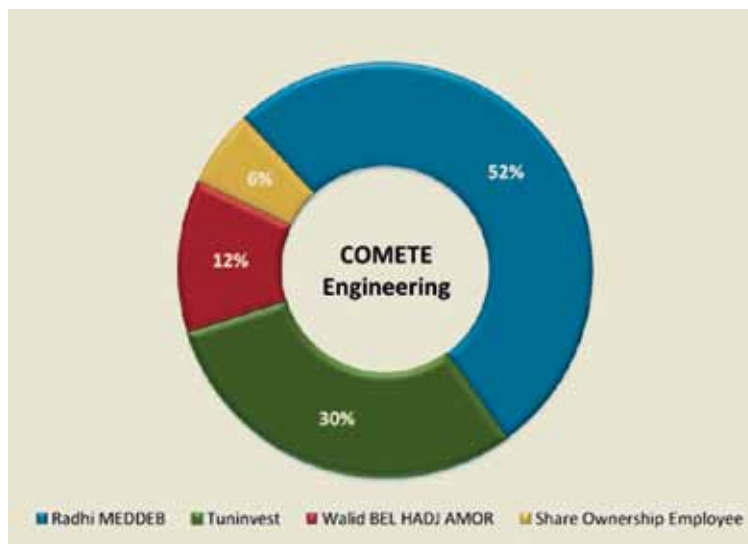
Its human resources capital, organized in autonomous multidisciplinary teams, demonstrates professionalism, creativity and rapid adaptation to different technical and economic international environments.

“ A strong expertise in the field of engineering and consulting ”

## Structure & Shareholding



## Equity Structure



## Technical Tools

Comete Engineering teams use the most updated computer tools to realize their projects:

Arc Info (SIG), Geomap, Arc View, Autocad, Robot, FISA, Adfer, Graitec (Eiffel and Arche), Mensura, Micropiste+, Ecodial, Calculux, Microsoft Project, Intranet, Sharepoint ...

## Organization

- Project Organization
- 4 departments: (business areas)
  - Infrastructure and Planning Department
  - Building Studies Department
  - Water and Environment Department
  - Economic Studies and Consulting Department
- Over 60 % of Engineers and Economists

## Business Areas



- Economic Studies & Consulting
- Building
- Industry & Energy
- Transport Infrastructures
- Planning and Development
- Hydraulic
- Environment

“ Since its inception, COMETE has targeted successfully the foreign market and realizes more than 70% of its turn over ”



## Economic Studies and Consulting

Within a context of globalization of approaches and issues, economic operators, governments or private firms need to build their development policies and strategies in a relevant, coherent and global competitive way.

It is within this innovative approach that COMETE Engineering has structured its offer in the field of economic studies and consulting.

Its experienced, creative and rigorous teams act independently and deal with their assignments in the total respect of the confidentiality of the collected data. They privilege the coordinated and balanced actions involving a global and definitely value creating vision for their clients. This professional approach has given COMETE Engineering the opportunity to be recurrently entrusted with the fulfillment of a large number of important assignments of key fields and has helped strengthen hence its client-partners trust: companies, public institutions, administrations and major international Development Funding Institutions.



# Building

Thanks to its multidisciplinary teams of specialized Engineers and project managers, COMETE Engineering carries out prestigious projects in the institutional, commercial and industrial sectors. Its intervention covers all the stages of a project cycle, from the systems preliminary conception to the delivery of the works.

Within a tight collaboration with its client-partners, COMETE Engineering identifies the requirements of every project. Its personalized approach optimizes -at every step- the extent and the level of its services in order to adjust to the expectations and objectives of its client partners.

Sangmelima Hospital (Cameroon)



Football stadium of Radès (Tunisia)



Grand Hotel Gammarth (Tunisia)



Grand Hotel Gammarth (Tunisia)

The multidisciplinary teams of COMETE Engineering enable it to cover all the building trades of the construction industry:

- Topography
- Geotechnics
- Structural studies
- Electromechanics
- Security & fire safety
- Wiring and networking

Chamber of representatives building (Tunisia)





## Industry & Energy



COMETE Engineering has established itself a long time ago as a major player in the industrial sector both at the level of project engineering and its management-development.

Being conscious of the importance of the industrial sector on our area of action, we developed a recognized expertise including the energy field, either conventional or renewable.

Our interventions follow up the projects from their feasibility stage to their final acceptance and start-up , by dealing with all the phases of engineering, construction and management.

The multidisciplinary and complementarity of its teams, enable COMETE Engineering to offer to its clients a true partnership going to handle all the facets of an industrial project and insure the success of its implementation.

“

As a major player in Africa and the Maghreb, COMETE Group has all the required abilities to meet the expectations and the highest demands of its customers and markets.”

# Transport Infrastructures

In terms of transport infrastructures, COMETE Engineering expertise covers the creation, rehabilitation, modernization and maintenance. It is concerned with projects of rural and agrarian roads, railroads, classified networks and highways.

Its multidisciplinary teams engineers of and technicians teams are trained to deliver quality services to each of the following stages of the project:

- General recognition of the site
- Selection and implementation of the alignment
- Traffic studies and project profitability
- Geological and geotechnical studies
- hydrological studies
- Track design
- Calculation and design of structures
- Works supervision, technical assistance and Project management



The projects are developed according to the most recent standards, involving the most appropriate implementing techniques and integrating environmental specificities.

West line of light rail Tunis-Manouba (Tunisia)



Enfidha Airport (Tunisia)



Rural roads (Congo)



Southern access motorway of Tunis (Tunisia)



Kita roads (Mali)



# Development & Urbanism

The planning and development department of COMETE Engineering targets to track urban and spatial changes to participate in defining the policies of spatial planning and development of the city.

To do this, it gets involved in the observation and analysis of demographic, economic and social data in order to engage prospective and strategic thinking and to elaborate proposals for the actions to be taken for the spatial planning.

Integrate zone of Zembra-Sidi Daoud (Tunisia)



Financial port of Tunis-Raoued (Tunisia)



South coastal zone of Grand Sfax (Tunisia)

It defines also guidelines for urban policies and elaborate point projects throughout the different scales of the study process.



Financial port of Tunis-Raoued (Tunisia)

“COMETE group favors the coordinated and balanced actions, involving a global and definitely value creating vision for its clients”

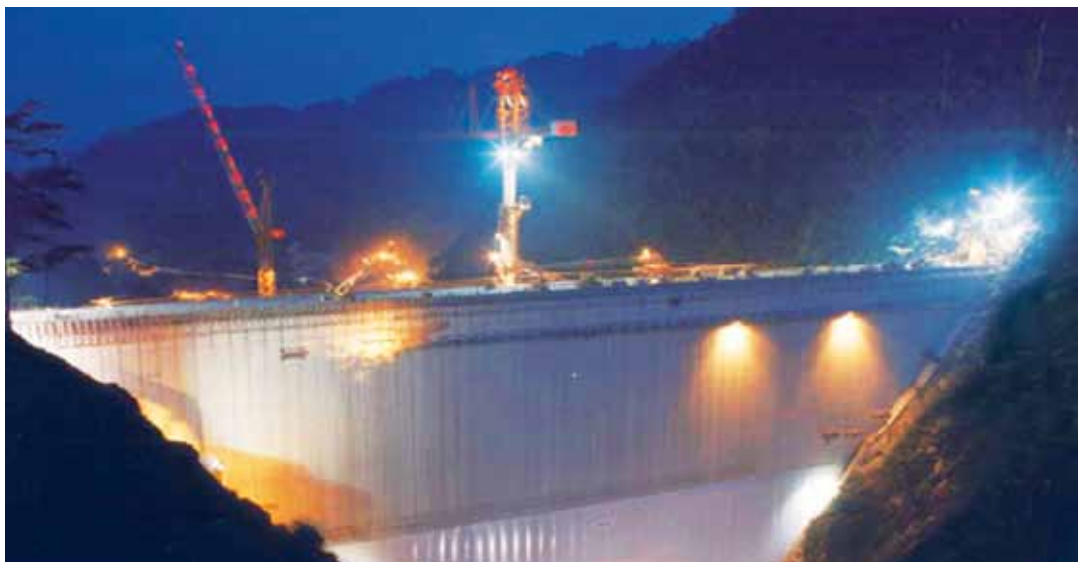


## Hydraulics

COMETE Engineering skills cover all the water fields. It revolves around the issue of managing water resources, seeking to ensure the adequacy between supply and need, in order to preserve the environment and the quality.

Our services cover the set of engineering assignments and enable the follow up of the projects from the feasibility studies to the works supervision.

The numerous references of COMETE Engineering in hydraulics, in Tunisia or internationally, attest that our teams have all the required abilities to undertake complex and diverse projects.



## Environment

COMETE Engineering concern for the environment has a multidimensional approach involving the concept of sustainable development.

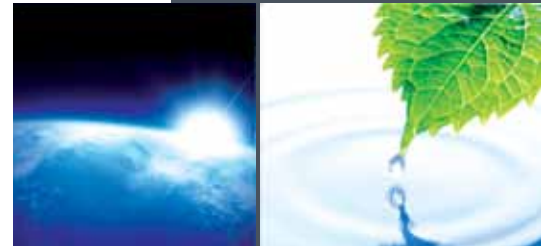
The set of developed projects deals with issues related to environment protection, through an integrated and coordinated approach.

The multidisciplinary of COMETE Engineering of the integration of all components of the regulatory, legal, technical, spatial and socio-economic features, specific to each project which mirrors a pertinent approach able to valorize and enhance the territorial and environmental contexts.

COMETE has developed an extensive expertise in the environmental field, enabling it today not only to bring fourth this dimension in the frame of infrastructure projects:

- Studies of environmental impact
- Environmental and social management plan

but also to contribute to the development of the environmental concepts on the political and institutional scale.



“ In order to increase the added value of its human capital, COMETE places quality at the heart of its assignments and organization ”



## Engagement & Certification

COMETE management undertakes to mobilize all its resources to carry on offering to its clients partners and all stakeholders : shareholders, staff, suppliers, civil society, a relationship of trust and respect , and high quality services going to insure their total satisfaction .

COMETE has hence developed a system of quality management based on the norm ISO 9001 vs. 2008.

This system makes COMETE undergo a process of continuous improvement of its approaches, resources and performances. The developed system of quality management, synthesizes the spirit of responsibility with which COMETE works locally and internationally. It targets quality objectives that reflect its commitments to its stakeholders:

- Clients : strengthen skills, proximity and availability of its staff to ensure the satisfaction of the needs and expectations of its clients in terms of quality, timelines and costs, and to reduce non quality occurrences and improve performances.
- Staff : develop an internal organization that enable them to express their talents, enhance their motivation and their commitment, and a training policy that optimizes their savoir-faire and contribute to the improvement of productivity.
- Shareholders : build trust relationship through transparent information and efficient organization ensuring the profitability of its activities.
- Suppliers : select suppliers on the basis of best value for money of their services and economic and social practices.
- Civil society: to carry out projects that integrate its current and future needs namely in term of safety and sustainability.

The management of COMETE is committed to ensure the compliance of its services to its quality objectives and to the applied regulatory and legal requirements namely to the norm ISO 9001 vs. 2008.

The head of Quality Management, is responsible for ensuring together with the members of the Quality Committee, good communication between the various intervening parties of the quality system. He shall regularly check the consistency of the engaged actions in meeting the fixed objectives, and report it regularly to the management, mainly at management reviews of the efficiency and performances of the quality system.

All the staff of COMETE undertakes to establish a conducive environment to develop the quality policy.



## Associations - Accreditations

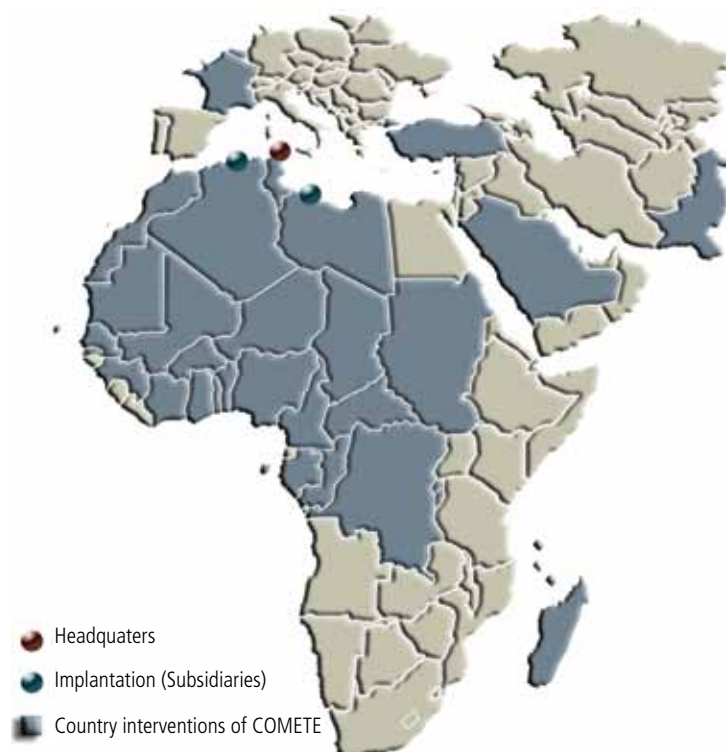
COMETE Engineering is member of :

- The International Federation of Consulting Engineers (FIDIC)
- Federation of Consultants from Islamic Countries (FCIC)
- The Federation of Arab and African Consultants (FAAC)
- The National Association of Consulting Engineers (ANBEIC – Tunis)
- The Tunisian-French Chamber of Commerce and Industry
- The Tunisian American Chamber of Commerce
- The Tunisian-Dutch Chamber of Commerce and Industry
- Arab Institute of Business Managers (IACE)

Agreements and international agreements

- World Bank
- European Investment Bank (EIB)
- African Development Bank (AFDB)
- Islamic Development Bank (IsDB)
- Arab Bank for Economic Development in Africa (BADEA)
- Arab Fund for Economic and Social Development (AFESD)
- OPEC Fund for International Development (OFID)
- Kreditanstalt für Wiederaufbau (KfW)
- French Agency for Development (AFD)
- Japan Bank for International Cooperation (JBIC)
- Japan International Cooperation Agency (JICA)
- International Finance Corporation (IFC)

## Geographic Presence



Algeria  
Benin  
Burkina Faso  
Burundi  
Cameroon  
Cape Verde  
Central African  
Republic  
Chad  
Congo  
Côte d'Ivoire  
Comoros Islands  
Djibouti  
France  
Gabon  
Gambia  
Ghana  
Guinea Conakry  
Libya  
Lebanon  
Madagascar  
Mali  
Mauritania  
Morocco  
Niger  
Nigeria  
Pakistan  
RD Congo  
Rwanda  
Sao Tomé & Príncipe  
Saudi Arabia  
Senegal  
Sudan  
Togo  
Tunisia  
Turkey



Immeuble COMETE, Centre Urbain Nord - Avenue Hédi Karray  
1082 Tunis Mahrajène - TUNISIE - BP 97 1002 TUNIS  
Tél : (+216) 71 70 78 00 / 71 70 79 00 - fax : (+216) 71 70 72 00  
E-mail : dg@comete.com.tn - Site Web : www.comete.com.tn